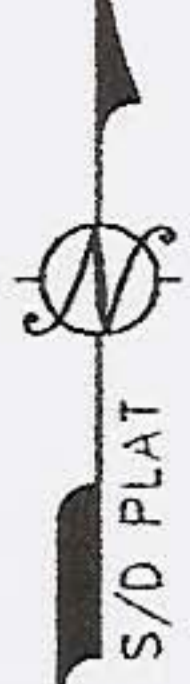
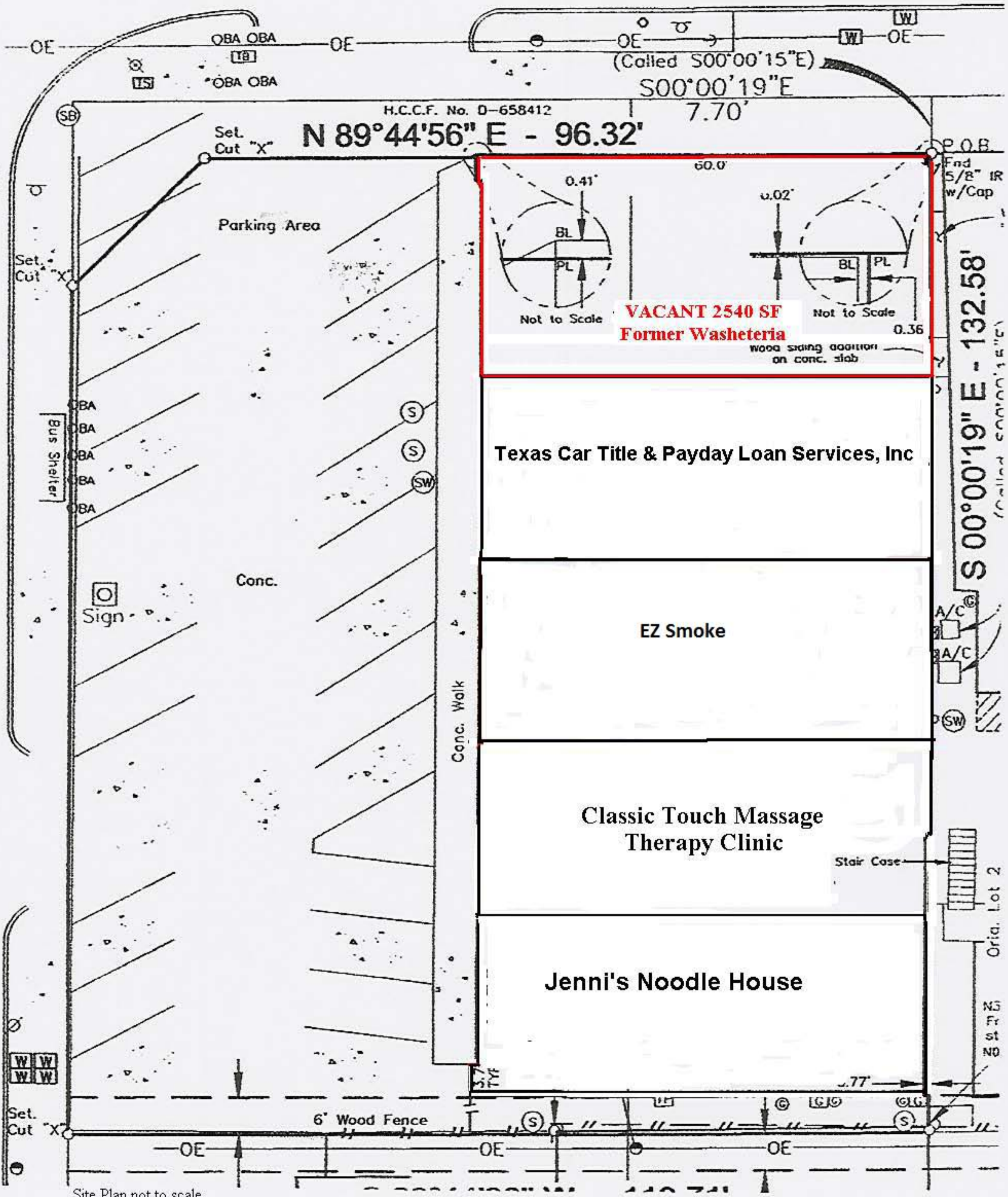


SB

SB



(Called N45°00'E)
N44°44'56" E
24.69'
(24.57')



H.C.C.F. No. D-658412

N 89°44'56" E - 96.32'

(Called S00°00'15"E)
S00°00'19"E

7.70'

60.0'



**VACANT 2540 SF
Former Washeteria**

wood siding addition
on conc. slab

Texas Car Title & Payday Loan Services, Inc

EZ Smoke

Classic Touch Massage
Therapy Clinic

Jenni's Noodle House

Parking Area

Conc.

Conc. Walk

Bus Shelter

Sign

6' Wood Fence

Stair Case

P.O.B.
5/8" IR
w/Cap

S 00°00'19" E - 132.58'
(Called S00°00'15"E)

A/C
A/C
SW

Stair Case
Orig. Lot 2

st 7.25
NO

S Shepherd Dr

(Called North)

NORTH - 115.14'

Set. Cut "X"